



Low Way. See book pages 36 - 37.



27th. SEPTEMBER. 1935.

THE YORKSHIRE EVENING POST

HARD BY THE BUSY NORTH ROAD.



Old cottages in the village of Bramham.





January 1984



and
March 2000



Hilldrop House - farm house - see Vol. 9, Clifton Road.

Hilldrop Cottage, Low Way

The cottage has three floors but the front room of each of the lower two floors are far older than the remainder. These two rooms consist of a barrel-vaulted cellar with a stone-flagged upper floor and were originally connected by an outside stone staircase, which is now in the middle of the house. At some point part of the stone staircase has collapsed so that all but three of the steps are now wooden. These two older rooms have the appearance of a medieval hall-house but we have never managed to find out any detail. The rest of the house may date from the 1700s.

At some point the house was far larger than it is now and extended over where the Methodist Chapel now stands. It was altered to its current size in 1797, although there are still two obvious blocked off doorways leading to the knocked down part. A 1797 penny was inserted into one of the doorways to mark the occasion of the alteration - it fell out a few years ago.

The earliest people we know of living in the house were the Wilks family in 1853. We found a couple of thrown away envelopes under a step addressed to James Wilks, Bootmaker of Bramham, and have also found many old scraps of leather that have been used to stuff gaps in walls. James and his wife, Maria, had six children and appeared on censuses for many years but eventually appeared to move away from the village - they disappeared from censuses around the 1880s and are not buried in the churchyard, though many other Wilks are. Do they have any descendants in the village who know what happened to them?

The next family we know of living in the house are the Thompson family, in-laws of Harry Tindall. Mr Tindall himself lived in the house for many years until the 1960s, and it was then used as offices for the builders, Higgs and Hill. After that it was derelict until the Soper family renovated and sold it in approximately 1969. Since then it has had many owners, including Reverend McMullen, the organist at York minister, who used to give recitals at the cottage.

We bought the cottage in 1990 and had our wedding reception here in October 1990. In 1999 we found out that the upper part of the house was structurally unsound and could have collapsed at any time. However after some serious building work the cottage should hopefully last many more years!



From Mrs. Catherine Jones

2000



Low Way : Nidderdale & The Cottage
2000



Low Way : Brook House 2000

Tudor Cottage , Low Way

One of the group of very old cottages along Low Way , it was certainly to be found on the maps of the early C 19. A century or more later they were the property of the Misses Whitaker who owned Plum Tree Cottage across the road , had a swearing parrot , and kept the White Horse Public House in succession to their father John. In the same era Tom Pullan , joiner and wheelwright --- and village molecatcher --- lived in Tudor Cottage . Tom 's relatives had been wheelwrights before him , and had worked Paradise Farm. Tudor Cottage was the scene of a Bramham tragedy when Tom Pullan deliberately shot himself in the shed in the yard , his body being found later by George Kitchen and his brother. Another resident was Tommy Trott , who , always in gaiters , carried the post up to the Park.



Tudor Cottage
2000

Plum Tree Cottage
2000



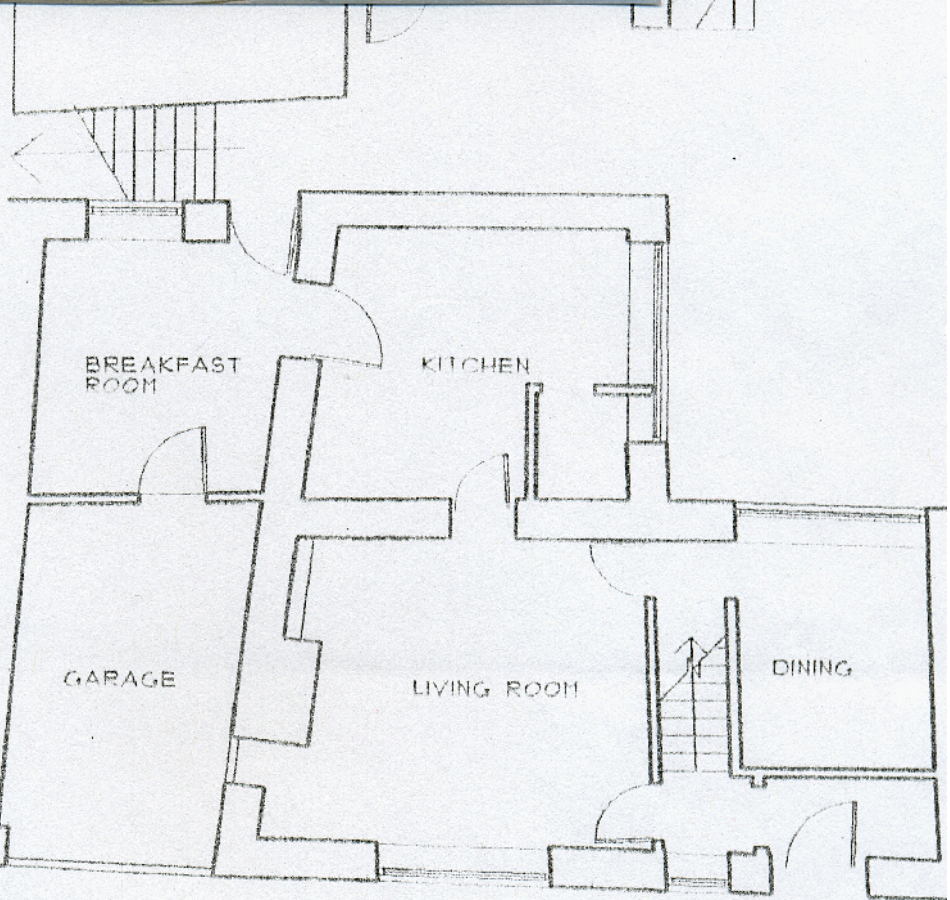
EXISTING LAUREL HEDGE TO BE PROTECTED / REINSTATED

EWGNT
EWGNT COTTAGE

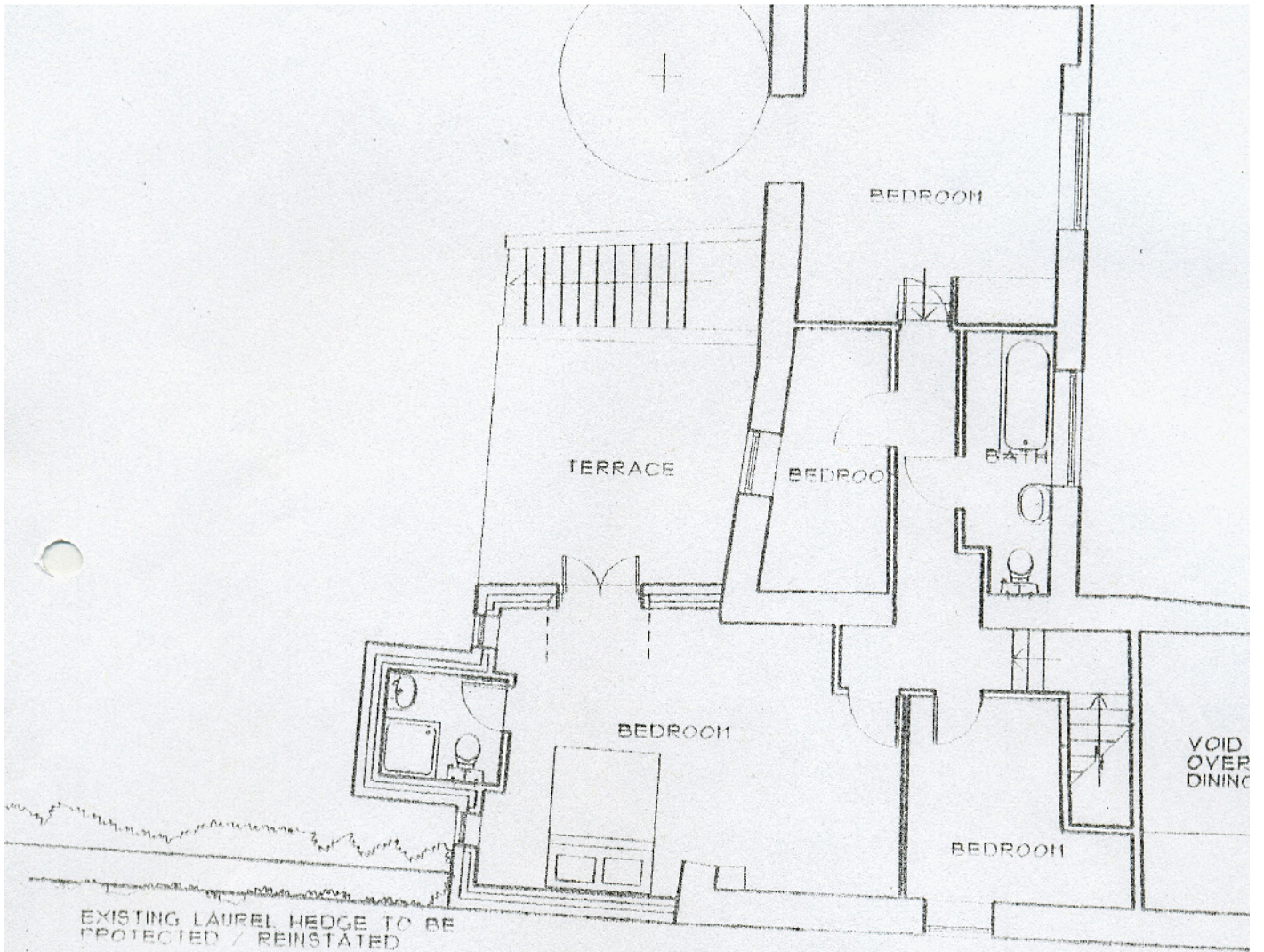
FIRST FLOOR

Low way

1999.



GROUND FLOOR



FIRST FLOOR

